

PARTS LIST			
ITEM	QTY	PART NAME	DESCRIPTION
1	1	76882 N1a UPPER TUBE	PIPE STL PE 1/2" WALL BLACK 40"
2	1	76882 N1b LOWER TUBE	PIPE STL PE 1/4" WALL BLACK 34 1/4"
3	1	76882 BASE	1 1/4" A36 PLATE
4	1	76882 SIDE	Ø36" X 1/2" WALL PIPE W/ CLASS 125 FFSO FLG.
5	3	76882 N2	4" NPT, 3000#, SA-105, THRD. H-CPLG.
6	1	76882 N3 TAPER PIECE	1/2" A36 PLATE
7	2	76882 VENT LINE TABS	5/8" A36 PLATE
8	2	76882 RIB 1	5/8" A36 PLATE
9	3	76882 RIB 2	5/8" A36 PLATE
10	4	76882 RIB 3	5/8" A36 PLATE
11	1	76882 SUPPORT PLATE	1 1/4" A36 PLATE
12	1	76882 EYE PLATE	1" A36 PLATE
13	1	76882 TOP FLANGE	1 1/4" A36 PLATE
14	1	76882 SUB COVER	1" A36 PLATE
15	1	76882 COVER	1" A36 PLATE
16	1	76882 COVER HANDLE	1" ROUND BAR A36
17	3	76882 LIFT EYE	3/8" X 1" FLAT BAR A36

COATING INFORMATION

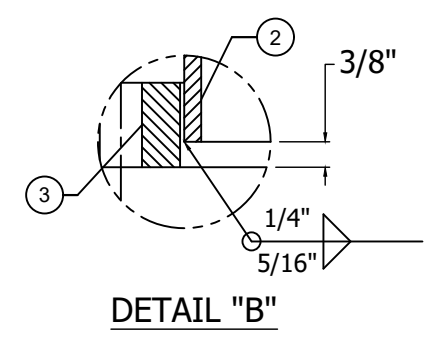
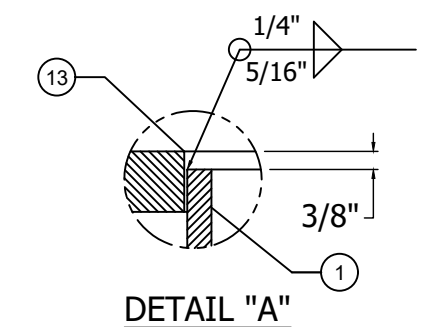
INTERIOR & EXTERIOR BLASTED PER SSPC-SP10 REQUIREMENTS. 2.0 MILS MINIMUM BLAST PROFILE.

INTERIOR COATED WITH ONE COAT OF TNEMEC SERIES 94-H2O HYDROZINC, 4-6 MILS D.F.T. TWO COATS OF TNEMEC SERIES 21, TNEMEC WHITE 00WH EPOXOLINE, 12-16 MILS D.F.T. EA. COAT

EXTERIOR PRIMED WITH ONE COAT OF TNEMEC SERIES 94-H2O HYDROZINC, 4-6 MILS D.F.T.

- NOTES:**
1. REMOVE SHARP EDGES
 2. GRIND ALL FLAME CUT EDGES SMOOTH

UNLESS OTHERWISE SPECIFIED,
ALL BOLT CIRCLES
T>- WELDS TO BE WATERTIGHT
ALL DIMENSIONS ARE IN INCHES,
X.X ± 0.1"
X.XX ± 0.03"
X.XXX ± 0.005"
ANGULAR ± 1'
FINISH: 250 MAX RA



DESIGNED BY - DATE: CMO - 1/18/2011	USEMCO USEMCO INCORPORATED 1602 REZIN RD. TOMAH WI. 54660 (608) 372-5911	DESCRIPTION: DISCHARGE COLUMN SIXTH ST. STORM WATER P.S.
DRAWN BY - DATE: DS - 1/18/2011		
CHECKED BY - DATE: CMO - 1/18/2011	SCALE: NTS DWG. NO.: 76882-1.1	

REV. NO.	REVISION	BY	CHK'D	DATE
0		DS	CMO	1/18/2011

SHEET 1 OF 1