

Other USEMCO Water Booster Products

Aquafer A complete below ground pump station designed for continuous human occupancy. We have eliminated the ladder entry and replaced it with a wide stairway entrance that allows easy walk down access and egress from the station. There is no above ground structure to maintain or worry about vandalizing.

Skid Pak A complete water booster station with controls for placement in an existing or new structure.

Mini Pak A complete water booster station and controls under an easy open flip top insulated fiberglass cover.

Water Fill Station A complete system including building for sale of water to commercial or industrial water transport carriers.

Well Houses A building with valving, controls and chemical feed, floor and roof openings for well pump setting and removal. Building can be reused in event of abandoning well.

Valve and Meter Vaults Above and below grade models. Below grade stations available with walk down stairway.



Aqua Pak

MODULAR WATER BOOSTER PUMP STATIONS



VERTICAL TURBINES

HORIZONTAL SPLIT CASE WITH BRIDGE CRANE

HURRICANE WIND LOADS



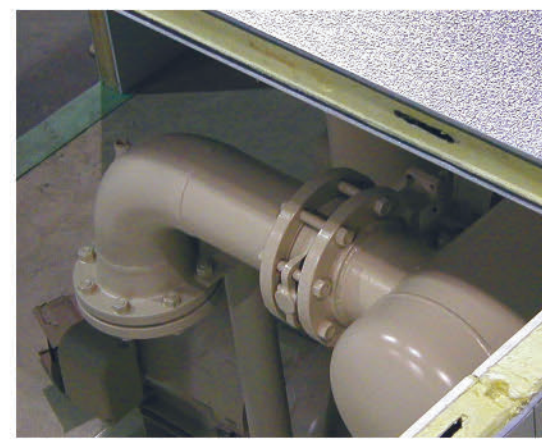
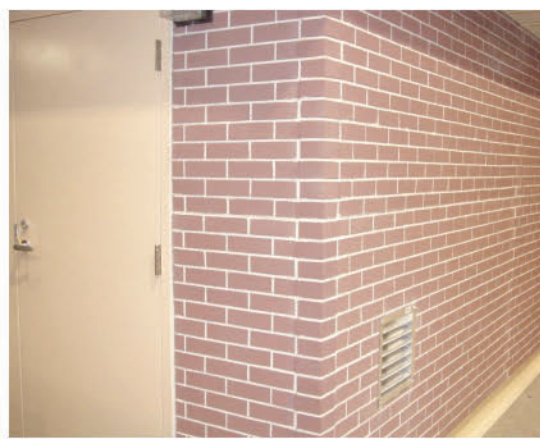
1602 Rezin Rd. Tomah, Wisconsin, 54660

Phone 608-372-5911 Fax 608-372-5016

www.usemco.com

© 2016 USEMCO All Rights Reserved





Custom designed. Tested and guaranteed.

WHY CHOOSE USEMCO'S AQUA PAK?

- Factory built stations will save 20% to 60% over field built stations
- Sole source warranty for the entire station
- Built to industry standards—Hydraulic Institute, NEC, AWS welding
- Qualified engineers and tradesman building in a controlled environment
- Expertise with thousands of installations since 1963
- Product testing to your design conditions
- Onsite factory startup

PHOTOS (right column)

From the top: standing seam roof with cedar siding, well house, internal generator, cedar shake roofs

USEMCO's Aquapak is a complete custom water booster pumping station built to your unique project requirements. It is manufactured in our factory using pumps, controls and valves of your choosing. The system is then enclosed in a building that is superior to any structure on the market today.

The 4-inch thick, R-30 insulated panel construction for roof and walls provide a durable energy efficient structure with a ten year warranty and can be designed to meet national, state, modular or local building codes. It also guarantees a controlled environment for the equipment with low energy costs because of its superior insulation. The interior has a white baked on polyester coating that is impervious to moisture. In fact, it has been designed to withstand a high pressure wash down. Exterior appearances are virtually unlimited enabling the building to fit into any architectural, commercial or residential setting.

If your project is in excess of the dimensions that can be transported, our design accommodates assembling completed modules on the jobsite with USEMCO personnel.

The AquaPak design can also include a separated chemical feed room, metering room, generator room, and water fill stations.

Specifications

AQUA PAK ENCLOSURE

- Insulated sandwich style roof and wall panels
- 4-inch thick R-30 urethane class 1

INTERIOR & EXTERIOR SURFACE

- Galvanized steel .0179" (26 gauge)
- G60 coating
- Baked on polyester finish
- Tan and white standard

PANEL DESIGN

- Tongue and groove
- Cam lock steel offset fasteners
- Foamed in place vinyl gaskets
- Air tight gaskets impervious to grease, oils, mildew, and stains

ROOF SYSTEM

- 0.045" EPDM sheeting
- ASTM-D4637 specification
- Mechanically fastened at edge
- Custom Fascia Trim

ENTRY WAYS

- Commercial insulated steel doors
- Commercial fiberglass doors
- Stainless steel lockset and hardware
- Tamper proof hinges
- Aluminum sill plate and door shield

ENCLOSURE WARRANTY

- 10 years on materials and workmanship

PUMPS

- Industry leading manufactures such as Cornell, Deming, Berkley, Grundfos, Gould, Fairbanks, American Turbine, Peerless, etc.
- Types include end suction, vertical turbine, and multi stage

ENVIRONMENTAL EQUIPMENT

- Lighting—Dual bulb rapid start fluorescent fixtures and LED

- Ventilation—Automatic thermostatically controlled with air changes per design and safety requirements
- Dehumidifier—Automatic and sized to maintain 60% relative humidity at 80 degrees Fahrenheit

CONTROL SYSTEMS

- Custom designed for your application
- USEMCO panel shop is UL 508 certified
- Constant speed and VFD applications
- USEMCO's acclaimed H2Pro controls standard
- Available controls include Allen Bradley, Square D, Mitsubishi, Safronics, Magnetek, and many others

GAUGES

- Pressure gauges standard

VALVES AND METERS

- Hydraulic controlled valves, butterfly valves, and silent check valves

BASE STRUCTURE

- Heavy duty custom design utilizing C channels and 3/8" plate steel
- Welded and fabricated to AWS and ASME type IX specifications

TESTING

- Complete hydraulic
- Hydrostatic
- Control systems
- UL QCZJ approved and labeled when specified

WARRANTY

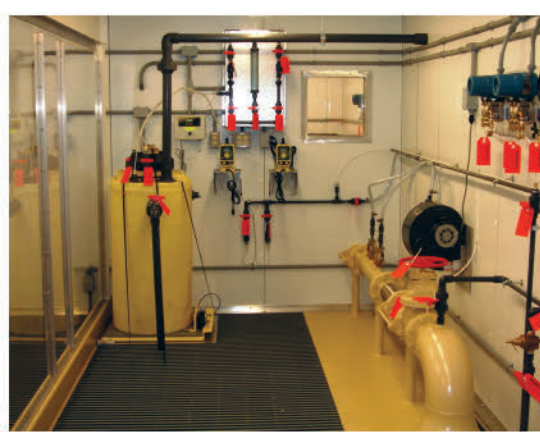
- Sole source
- Equipment, pumps, workmanship, and building
- 10 year warranty on building



FIRE PUMP



CHEMICAL FEED



CHLORINE INJECTION

