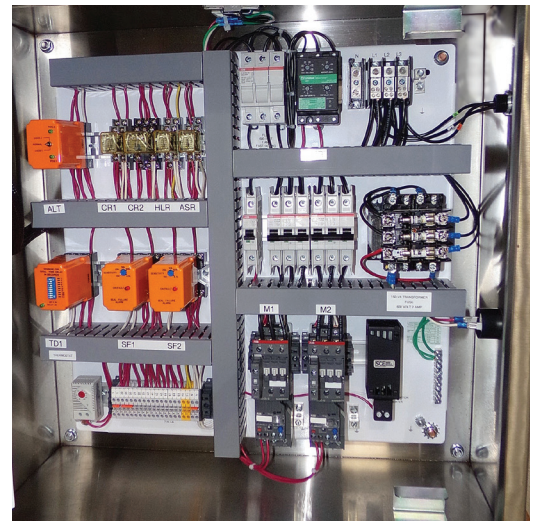


Power Pack

UL® 508 LISTED CONTROL PANEL



Compact. Versatile. UL Certified.

The Power Pack UL® 508 listed pump control panel is your cost-effective solution for basic pump operations and alarms. These compact (24 x 24 x 12 inch) stainless steel panels are compatible with any pump using resistive seal probes including: Barnes, Chicago, HOMA, Hydromatic, Myers, PACO, PumpEx, Yeomans, and ABS.

STANDARD FEATURES

- All non-proprietary components.
- NEMA 4X SS enclosure—pad lockable
- Inner door
- Main lugs
- Lightning arrestor
- Phase monitor with line fuses
- Pump circuit breakers
- IEC rated FVNR starters
- Ambient compensated overloads & resets
- Hand, Off, Auto switches
- Run lights
- Run-time meters
- Control transformer
- Condensation heater & thermostat
- Lag delay timer
- Alternator w/sequence selector switch
- Alarm light, buzzer with silence switch
- Overtemp shutdown
- Seal fail alarm lights
- Wall mounting brackets
- Factory wired and tested
- 28 FLA max per pump
- Resistive probe adjustable seal fail relay
- High-level dry alarm contact

The Power Pack duplex control panels are available in the following 3 phase configurations for pumps not exceeding 28 full load amps per pump.

Voltage	208V					230/240V					460/480V				
Horsepower	1/2-2HP	3HP	5HP	7.5 HP	10HP	1/2-2HP	3HP	5HP	7.5HP	10HP	1/2-5HP	7.5HP	10HP	15HP	20HP
SCCR	10KA	10KA	10KA	10KA	10KA	10KA	10KA	10KA	10KA	10KA	10KA	10KA	10KA	10KA	10KA
Circuit Breaker Size	15A	20A	25A	40A	60A	15A	20A	30A	45A	60A	15A	20A	25A	40A	60A

Single-phase configurations available with capacitor and relay kits supplied by customer.

Voltage	240V				
Horsepower	1/2-1HP	1.5HP	2HP	3HP	5HP
Circuit Breaker Size	15A	20A	25A	35A	60A

Optional Sentry Lite Touchscreen Pump Controller

