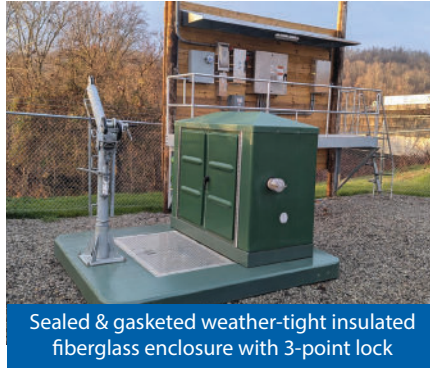
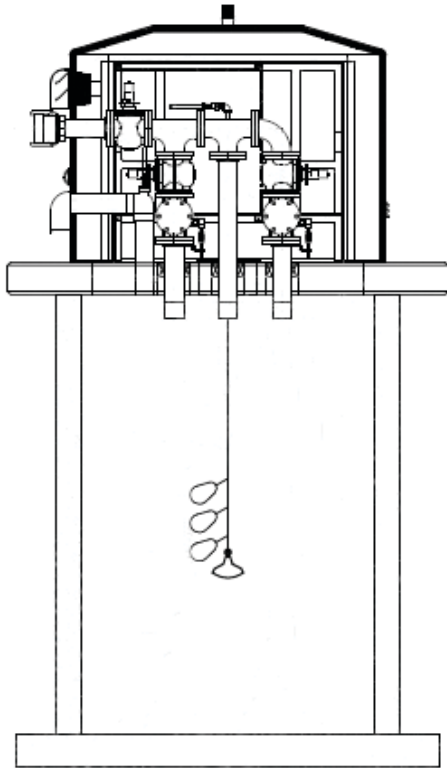


PumpMate™

ABOVE-GRADE VALVE AND CONTROL STATION. WORKS WITH ANY BRAND SUBMERSIBLE PUMP



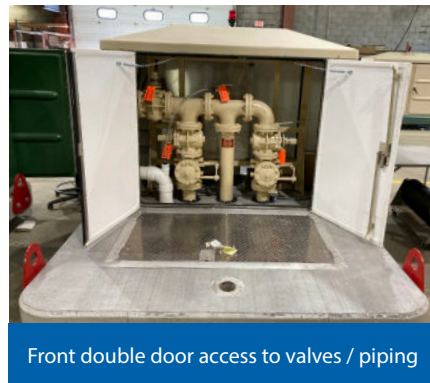
An above-grade station packaged with piping, valves, and controls and works with any brand submersible pump. The station arrives complete for pairing with your supplied pumps for mounting on new or existing fiberglass or concrete wet wells. Simply mount the PumpMate on the wet well, connect the main power and wet well piping, then it's ready to go.



Sealed & gasketed weather-tight insulated fiberglass enclosure with 3-point lock



Easy access to control panel on backside of enclosure



Front double door access to valves / piping



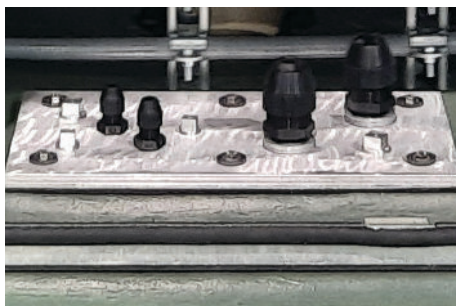
Aluminum bases are also an option for fiberglass wetwells

AVAILABLE OPTIONS

- Aluminum / steel / concrete base
- 2", 3", 4", 6" piping assembly
- Multiple color options for enclosure & base
- Generators / generator receptacle
- Bypass pump connection
- Safety grates
- Alarm horn / alarm dialer
- Flow meter
- Auto air release
- Multiple options for plug / check valves
- SCADA output connections

Custom Designed. Built to Last.

- Fully assembled at factory
- Factory tested prior to shipment
- Fiberglass insulated enclosure
- Gel coated inside and out
- Reinforced concrete base
- UL listed
- Compliance with all state & local codes
- Single source responsibility
- 1 year warranty
- Extended warranties available
- 20-30% savings over traditional construction



1/2 inch aluminum transition plate for floats & transducer connection



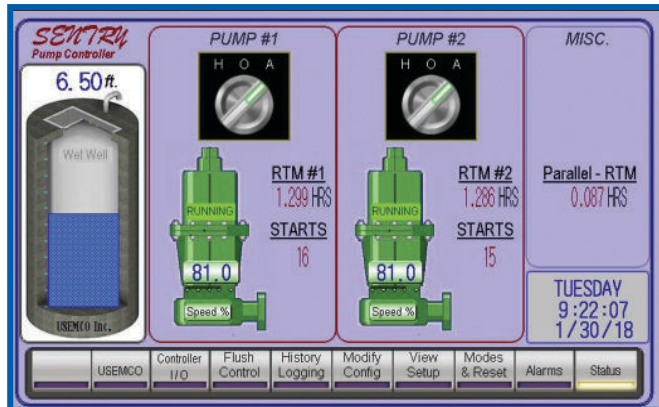
Arrives assembled for drop in place install



Back-up power generators

PumpMate is designed to integrate seamlessly with our Sentry pump controllers, providing reliable management of multiple sewage pumps in pump-down applications. Operators can monitor pump activity and flow data through an intuitive interface. PumpMate is available with either a Variable Speed or Constant Speed Sentry controller to match the needs of your station.

Variable Speed

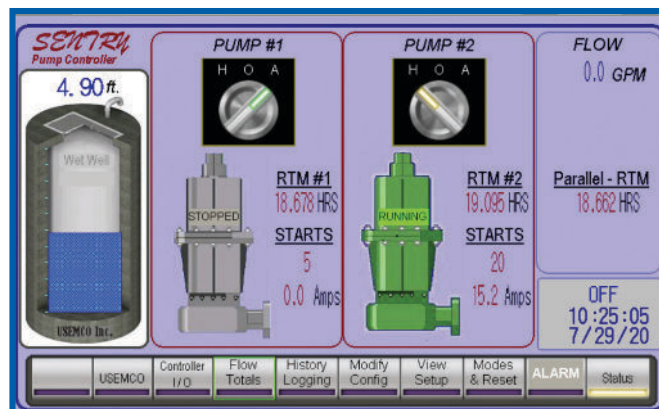


Main Screen

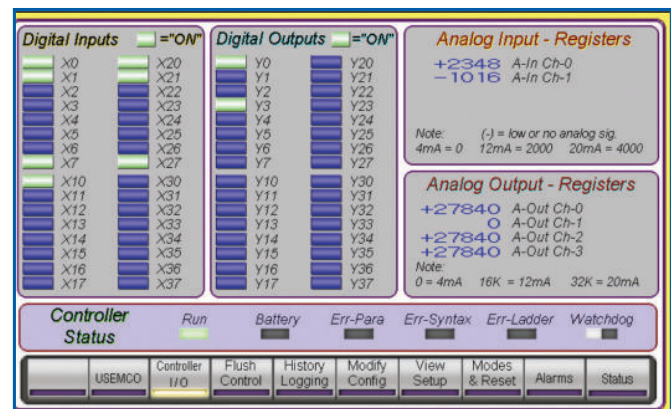


View setup

Constant Speed



Main Screen



Controller I/O

Complete Lift Station Solution.

Our PumpMate combines durable fiberglass construction, easy access to internal components, and intelligent pump control into one fully integrated package. It eliminates the need for a separate valve vault, valve vault access door, external panel mounting, and field wiring from the control panel to the wet well. A factory-built system reduces installation time and cost, simplifies project coordination, and delivers consistent quality from a single source.

Designed, assembled, and tested at the factory — ready for installation and operation.



TALL PUMPMATE

Slightly larger than the standard PumpMate, but similar features. A one-piece valve and control station. All components are above ground allowing for quick and easy access to controls or piping. The increased size and height of the building allow for the installation of larger piping and wet wells with diameters of 8 feet or above applications. Pairs with Sentry variable speed or constant speed controllers.



WALK-IN PUMPMATE

The next size up is our Walk-in PumpMate, which provides ample space for larger piping, generator rooms, control rooms, chemical feeds, etc. Packaged with controls, valves, & piping, buildings are well lit with LED ceiling lights, heated, ventilated, spacious, and most importantly, it keeps your workers as safe as possible when inside. Pairs with Sentry variable speed or constant speed controllers.



TOPVAULT

Similar to our PumpMate in design, except with an aluminum base. An above-grade, lightweight aluminum construction station with piping, valves, and controls. Designed for all 2, 3, or 4-inch submersible pump applications, new or retrofit. Packaged with our Sentry Lite controller.



TOPVAULT S

TopVault S is the same design as the standard TopVault, without the fiberglass cover. Best for warmer areas where freezing isn't an issue. Can be packaged with our Sentry Constant, Variable, or Lite controller.



STEEL SUBMERSIBLE

A pre-fabricated, below-grade, or partially buried vessel used to collect and transfer sewage or stormwater from low-lying areas to higher elevations. These stations feature a durable steel, epoxy-coated, vessel containing submerged pumps, guide rails, valves, and control panels.



DRY PIT - FLOODED SUCTION

A flooded suction below-grade pump station designed for continuous human occupancy and are not classified as a confined space for routine entry. The 8-14 foot diameter pumping stations are designed for duplex and triplex pump configurations, continuous human occupancy and provide the operator with a clean sheltered environment.



1602 Rezin Rd. Tomah, Wisconsin 54660
Ph: 608.372.5911
Fax: 608.372.5016
www.usemco.com