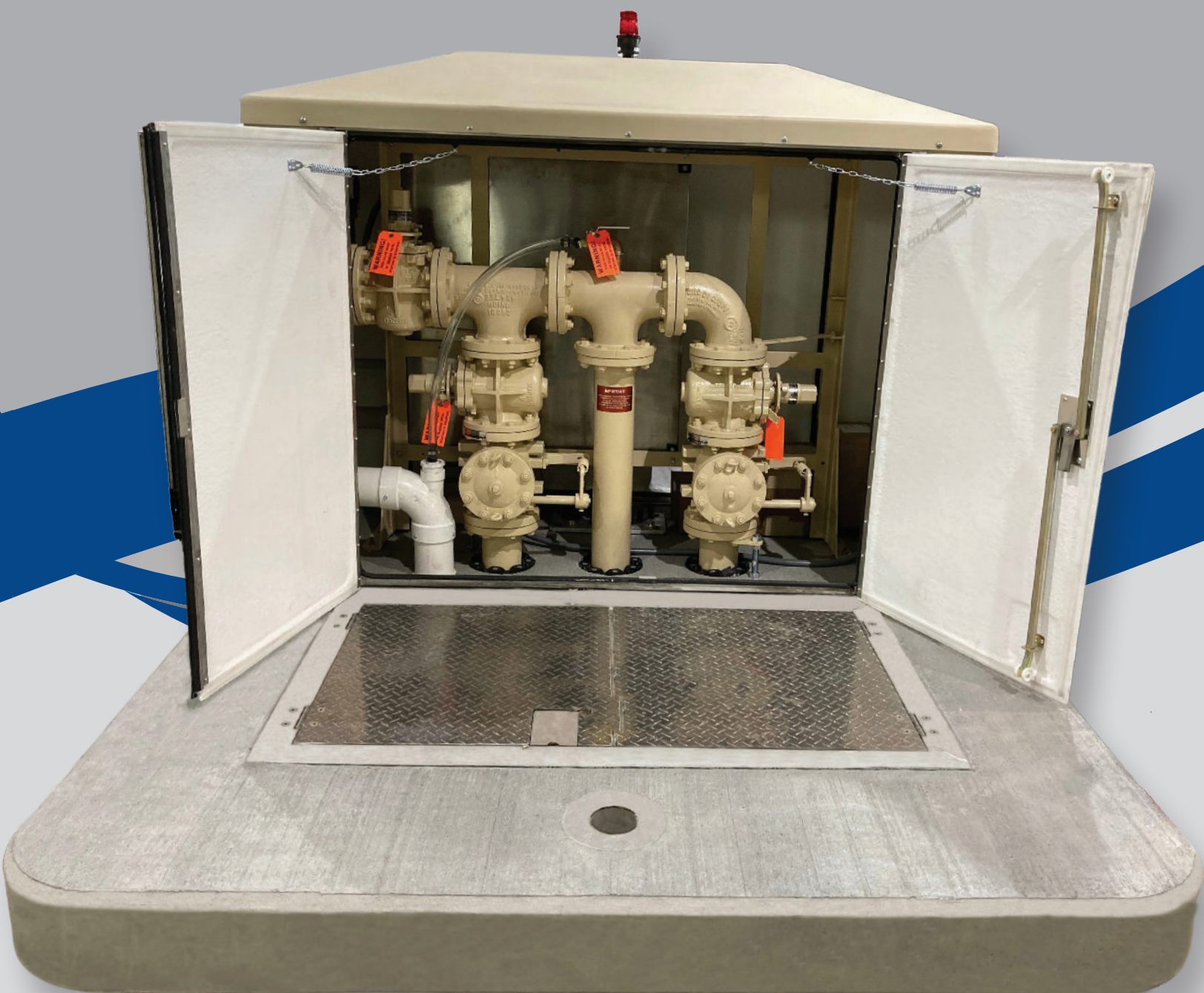


OTHER USEMCO WASTEWATER PRODUCTS

Packaged Submersible Station: A complete wetwell and valve vault with installed hatches, guide rails, base elbows, piping, plug or gate valves, and check valves.

Dry Pit: A flooded suction below-grade pump station with stairway entrance that is designed for continuous human occupancy and is not classified as a confined space for routine entry.



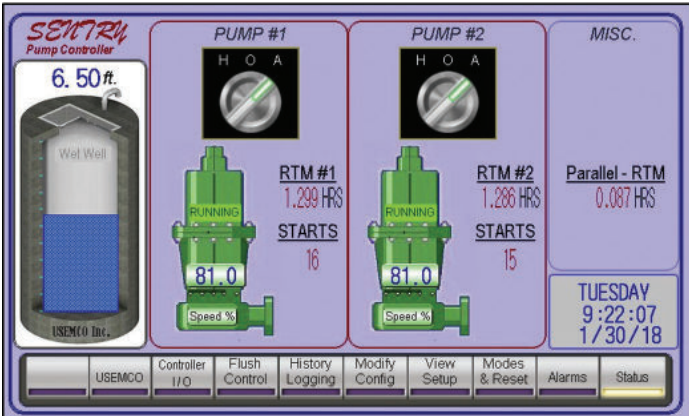
**ABOVE GRADE VALVE & CONTROL STATION
FOR ANY SUBMERSIBLE PUMP**

1602 Rezin Rd. Tomah, WI 54660
Phone: 608.372.5911
Fax: 608.372.5016
P.O. Box 550
www.usemco.com

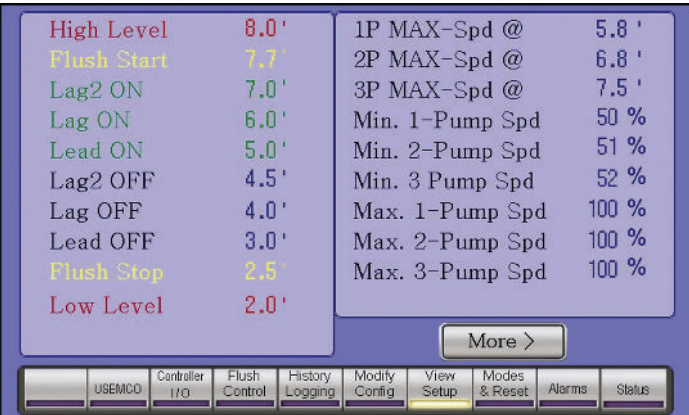


SENTRY Controller

Variable Speed

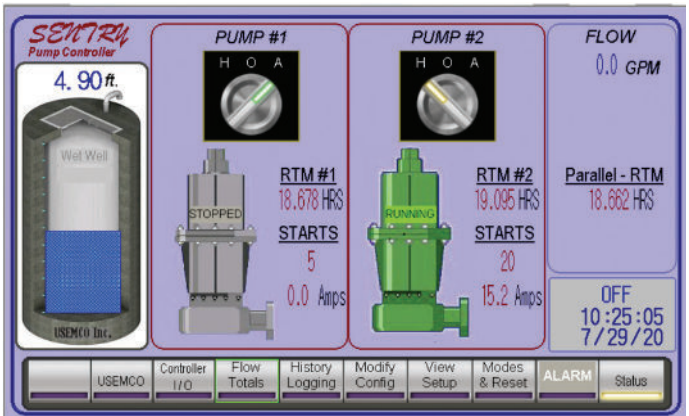


Main Screen

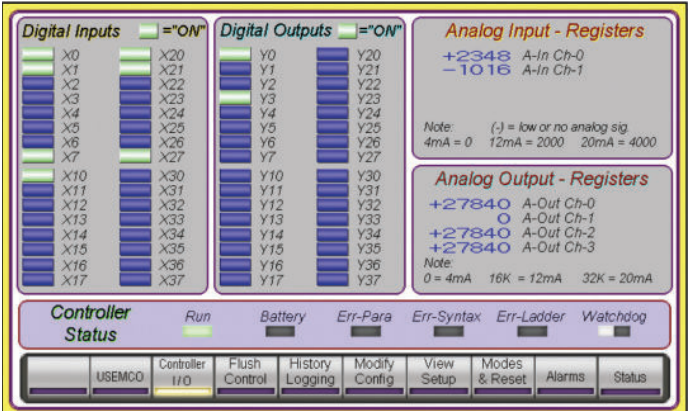


Station Set Up

Constant Speed



Main Screen



USEMCO SENTRY is SCADA ready (Modbus TCP & dry contacts)

Options



Flow meter



Safety grate



Ball Checks



Auto air release



Walk-In PumpMate



Bypass pump connection & generator receptacle

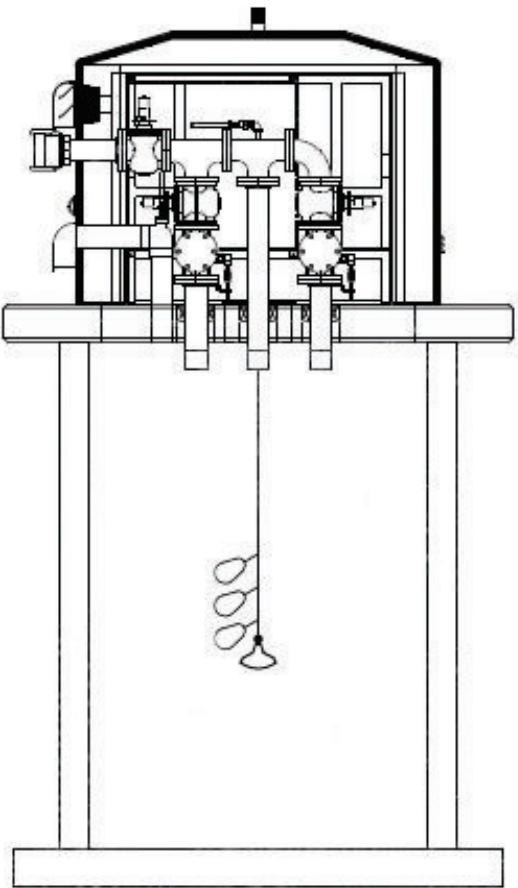


PumpMate with generator

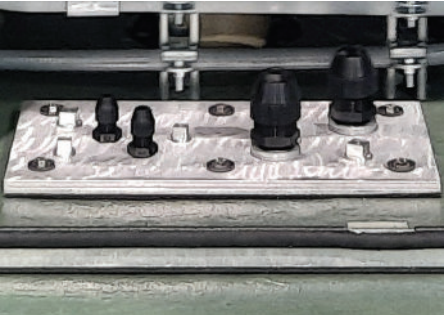
Other Options

- VFD
- Alarm horn
- Alarm dialer
- Enclosure color
- Discharge pressure gauge
- Check valve limit switches

WORKS WITH ANY SUBMERSIBLE PUMP



One-piece valve & control station that is fully assembled at factory. Fits wetwells 5-12 ft diameter.



1/2 inch aluminum base plate for floats and transducer connection



Thermostatically controlled wall heater and exhaust fan.



Manual air release valve

ELIMINATES

- Confined space entry
- Valve vault and hatch
- External panel mounting

FEATURES



Front double door access to valves and piping. 2", 3", 4" or 6" piping assembly with multiple options available for plug and check valves as well.



Rear double door access to control panel. Control components can be customized to incorporate drives, controllers, and SCADA outputs of your choice.



Sealed and gasketed weather-tight insulated fiberglass enclosure with a 3-point lock. The enclosure is gel-coated inside and out and mounted on a reinforced 8" concrete base. Multiple color options are available for exterior and base coatings. Aluminum bases are also an option for fiberglass wetwells.

