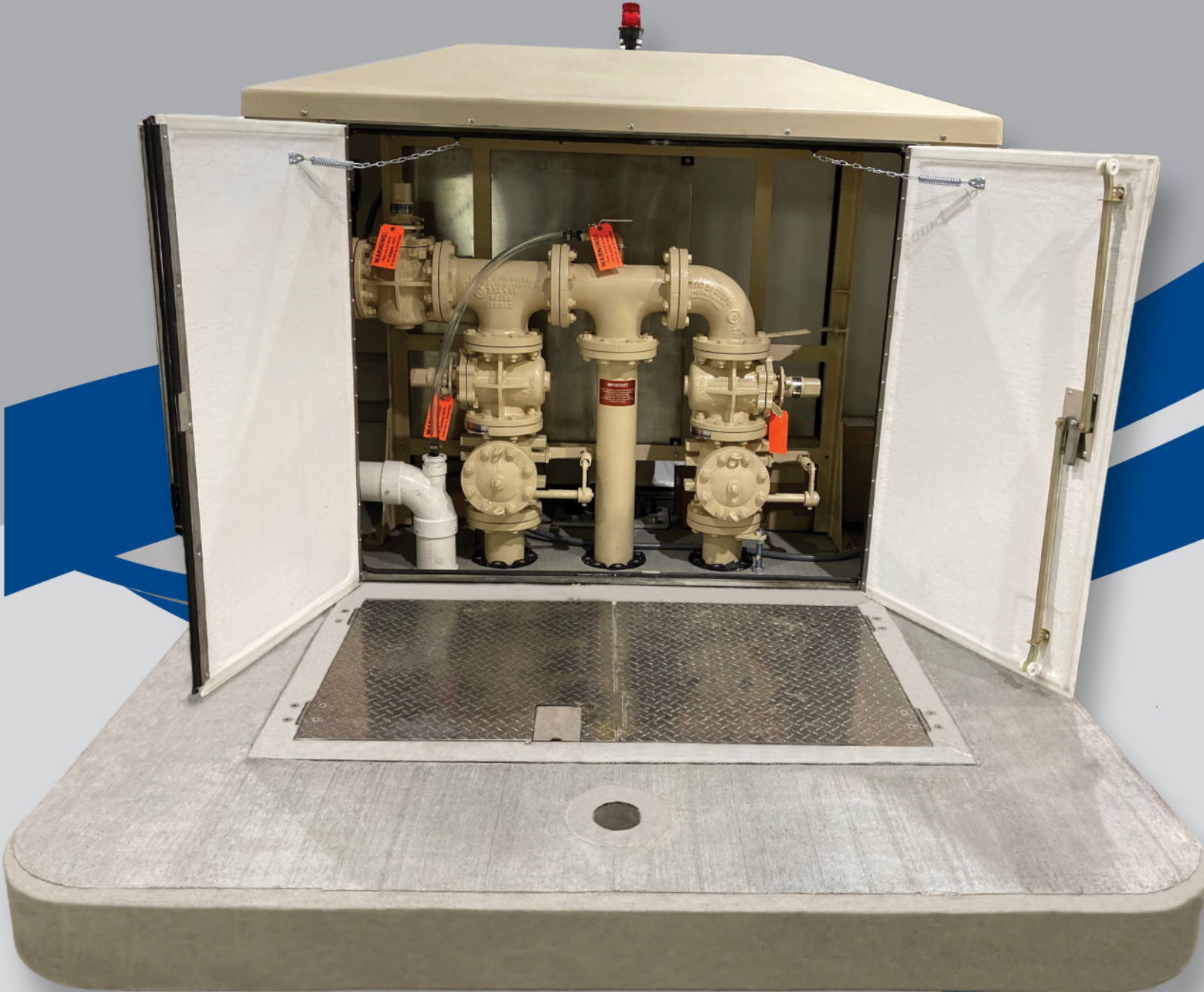




# PumpMate™

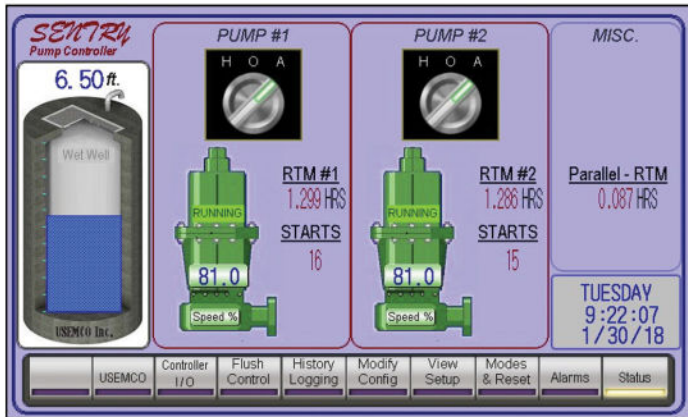
USEMCO



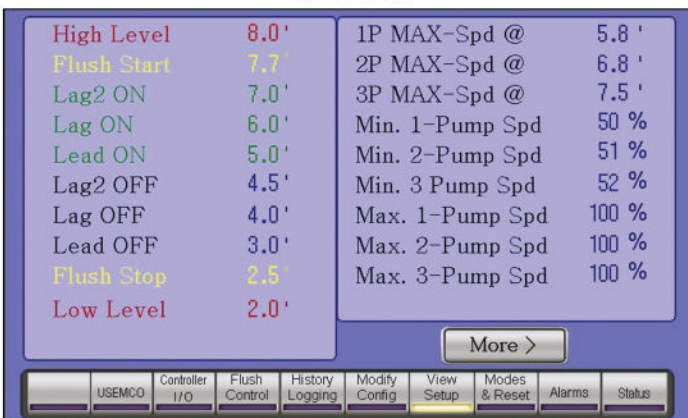
**ABOVE GRADE VALVE & CONTROL STATION  
FOR ANY SUBMERSIBLE PUMP**

# SENTRY Controller

## Variable Speed

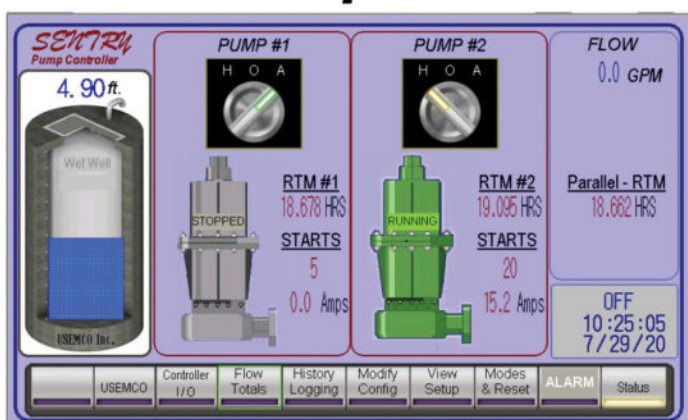


Main Screen

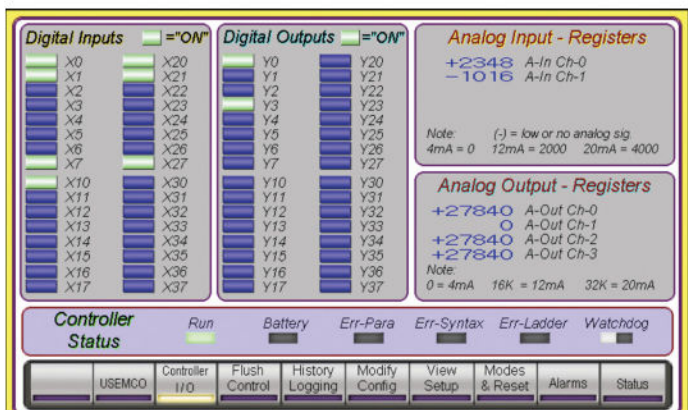


Station Set Up

## Constant Speed



Main Screen



# Options



Flow meter



Safety grate



Ball Checks



Auto air release



Walk-In PumpMate



Bypass pump connection & generator receptacle



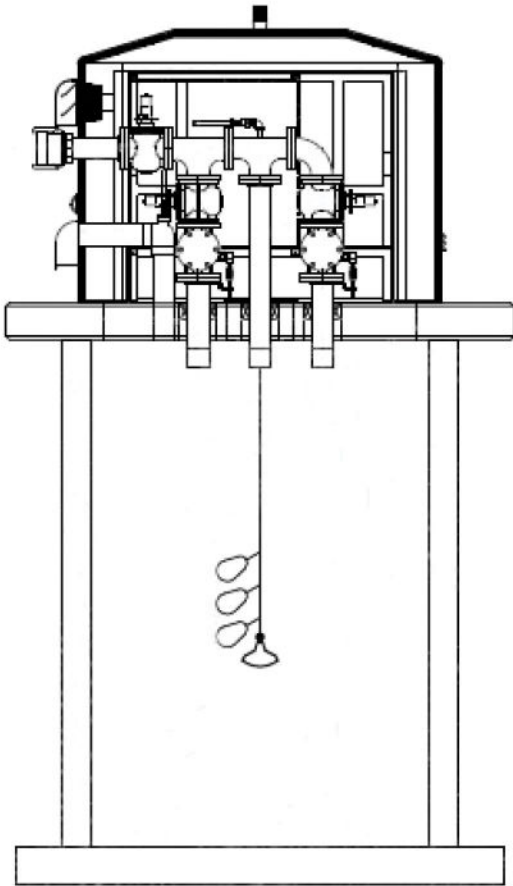
PumpMate with generator

## Other Options

- VFD
- Alarm horn
- Alarm dialer
- Enclosure color
- Discharge pressure gauge
- Check valve limit switches



# WORKS WITH ANY SUBMERSIBLE PUMP



## ELIMINATES

- *Confined space entry*
- *Valve vault and hatch*
- *External panel mounting*

## FEATURES



Front double door access to valves and piping. 2", 3", 4" or 6" piping assembly with multiple options available for plug and check valves as well.



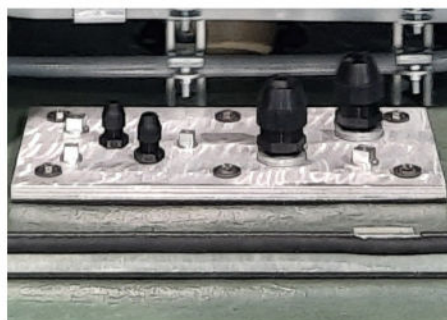
Rear double door access to control panel. Control components can be customized to incorporate drives, controllers, and SCADA outputs of your choice.



One-piece valve & control station that is fully assembled at factory. Fits wetwells 5-12 ft diameter.



Sealed and gasketed weather-tight insulated fiberglass enclosure with a 3-point lock. The enclosure is gel-coated inside and out and mounted on a reinforced 8" concrete base. Multiple color options are available for exterior and base coatings. Aluminum bases are also an option for fiberglass wetwells.



1/2 inch aluminum base plate for floats and transducer connection



Thermostatically controlled wall heater and exhaust fan.



Manual air release valve



# OTHER USEMCO WASTEWATER PRODUCTS

**Packaged Submersible Station:** A complete wetwell and valve vault with installed hatches, guide rails, base elbows, piping, plug or gate valves, and check valves.

**Dry Pit:** A flooded suction below-grade pump station with stairway entrance that is designed for continuous human occupancy and is not classified as a confined space for routine entry.



1602 Rezin Rd. Tomah, Wisconsin 54660  
Ph: 608.372.5911  
Fax: 608.372.5016  
[www.usemco.com](http://www.usemco.com)