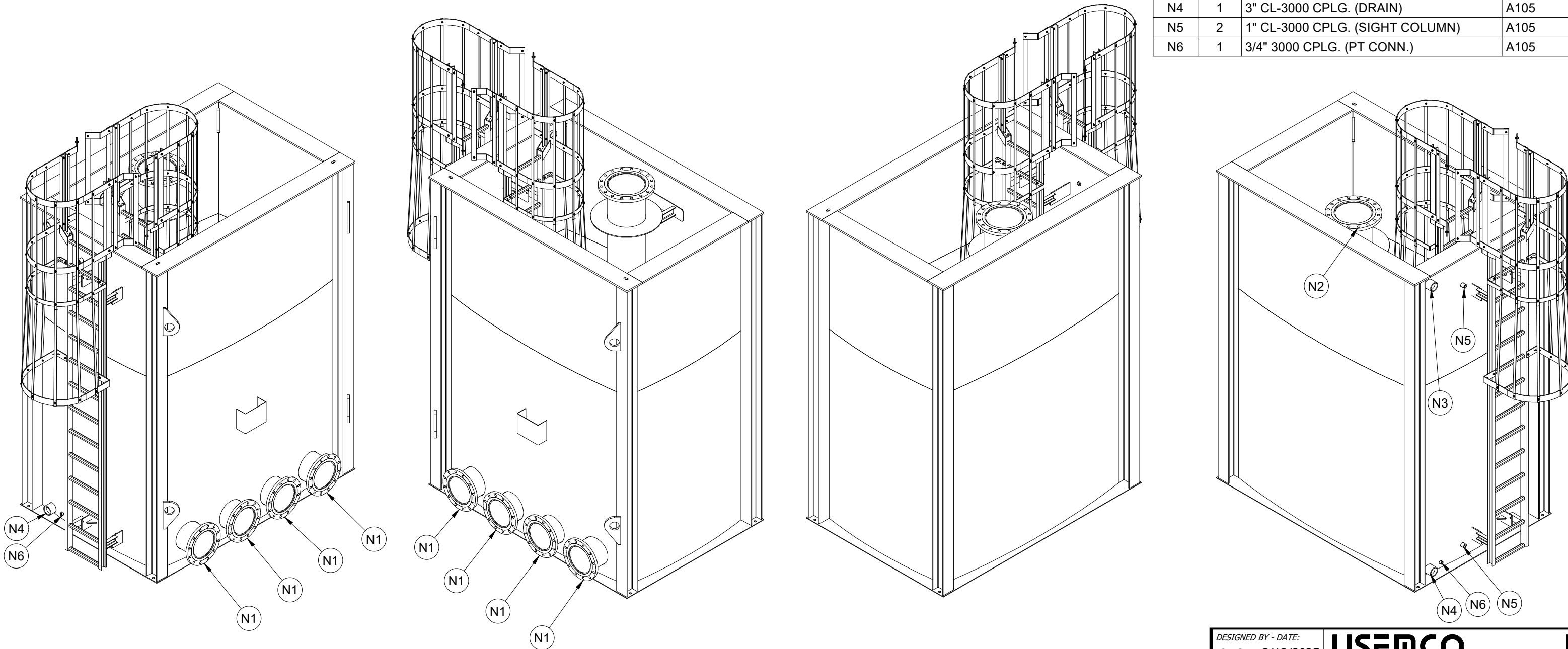



NOTES:

1. MATERIAL OF CONSTRUCTION IS CARBON STEEL.
 2. LIQUID-TIGHT WELDS ARE DYE PENETRANT TESTED.
 3. ALL WELDS ARE FULL PENETRATION, UNLESS OTHERWISE NOTED.
- DRY WEIGHT: 8,020 LBS.

PARTS LIST			
ITEM	QTY	DESCRIPTION	MATERIAL
		BOTTOM - 1/4" BUTT WELDED	A36
		STRUCTURAL - VARIABLE	A36
		SHELL - 1/4" BUTT WELDED	A36
N1	4	12" 150# FLG. NOZZLE (PUMP SUCTION) W/ 45° ELBOW & VORTEX BREAKER	A105/153B
N2	1	16" CL-150 NOZZLE (RETURN) W/ DIFFUSION SLOTS	A105/A312
N3	1	3" CL-3000 CPLG. (OVERFLOW)	A105
N4	1	3" CL-3000 CPLG. (DRAIN)	A105
N5	2	1" CL-3000 CPLG. (SIGHT COLUMN)	A105
N6	1	3/4" 3000 CPLG. (PT CONN.)	A105



DESIGNED BY - DATE: CMO - 3/12/2025	USEMCO USEMCO INCORPORATED 1602 REZIN RD. TOMAH WI. 54660 (608) 372-5911	
DRAWN BY - DATE: EPF - 3/12/2025		
CHECKED BY - DATE: CMO - 3/12/2025	DESCRIPTION: 5K (NOMINAL) SUMP TANK	
SCALE: NTS	DWG. NO.:	99767
SHEET 3 OF 14		