

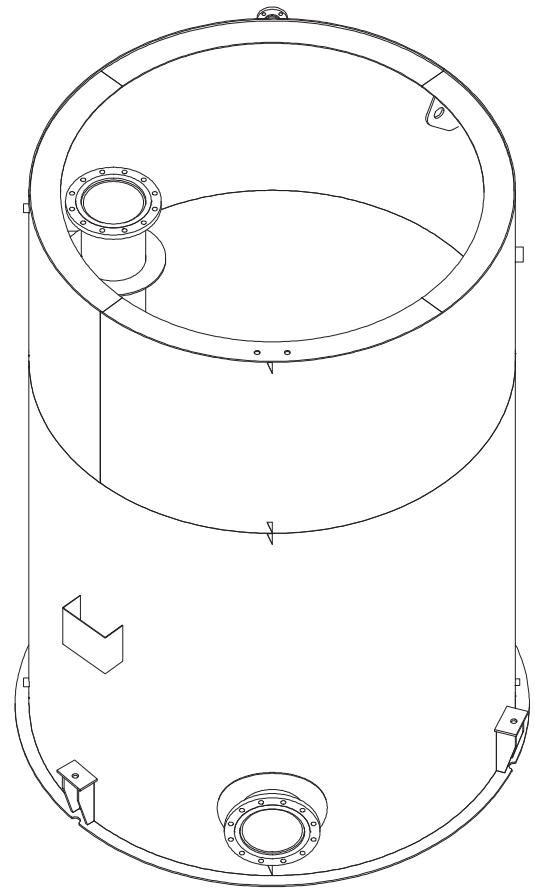
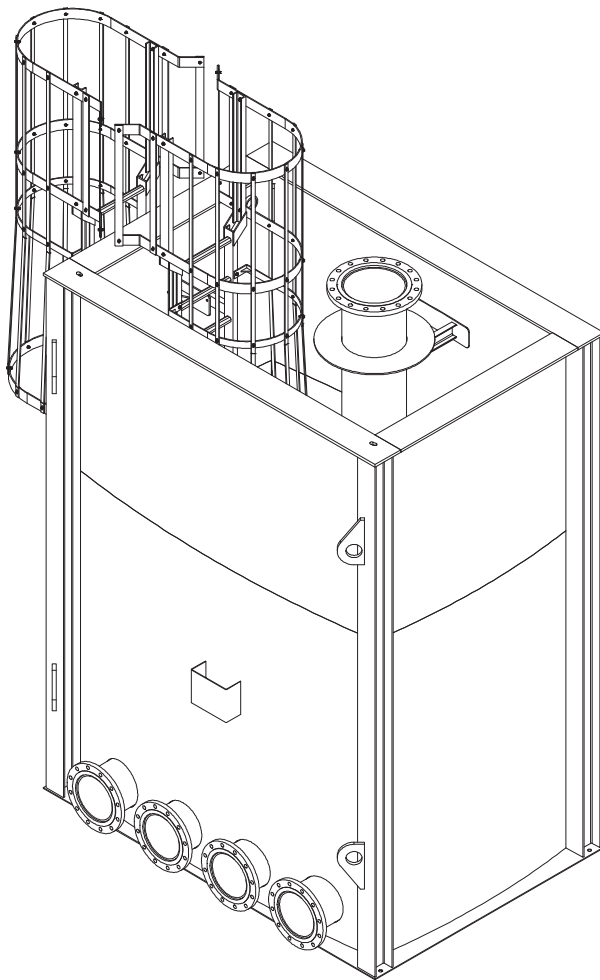


NORTHLAND TANK & FAB

REMOTE SUMP TANKS

USEMCO's Northland Tank and Fab Remote Sump Tanks are used to provide freeze protection by maintaining the cooling tower's mass of water inside a building during cold weather operation.

Remote Sump tanks simplify water treatment by providing a single location for monitoring water quality.



Northland Tank and Fab's Remote Sump Tanks are available as rectangular, cylindrical, and two-piece construction. The standard carbon steel, epoxy coated tanks may be substituted for stainless steel materials.

